

DEPARTMENT OF AGRICULTURE

**PHILIPPINE RUBBER
RESEARCH INSTITUTE**

PRIMER



Philippine Rubber Research Institute
Department of Agriculture

Interim Office:
DA-Research Complex, Sanito, Ipil, Zamboanga Sibugay
Tel: (062)333-2879; Email: prri_office@yahoo.com.ph

Liaison Office: 2nd floor DA, Elliptical Road, Diliman, QC
Tel: +632 9288755 local 2265



DA - PRRI

Institutional Profile

National Government Agency

PRRI is a national agency or staff bureau of the Department of Agriculture entrusted to serve the country's rubber stakeholders. Its mandate is to enhance the development and competitiveness of the rubber industry in the Philippines.

It was incorporated by Republic Act 10089 on the 14th Senate Congress on their Third Regular Session approved by the House of Representatives. RA 10089 is an act creating the "PHILIPPINE RUBBER RESEARCH INSTITUTE TO DEVELOP THE PHILIPPINE RUBBER INDUSTRY AND FOR OTHER PURPOSES".

Board of Members

Sec. 9 of RA 10089 is the Composition of the PRRI Advisory Board. There is hereby created an Advisory Board which is mandated to develop policies and programs aimed at improving the state of technologies needed for the Philippine rubber industry in order to meet global standards for competitiveness and product quality.

The Advisory Board is composed of the following:

- Secretary of the DA or his representative, as chairman;
- Undersecretary of the DA, as vice chairman;

- Executive Director of the Bureau of Agricultural Research;

- Executive Director of the Bureau of Plant Industry;

- Executive Director of the PRRI; and

One (1) representative from the rubber producers, and one (1) representative from rubber processors, as members, to be appointed by the President of the Philippines, upon recommendation of the DA, for a term of three (3) years.

Functions and Powers of the PRRI Advisory Council

- Formulate policies and initiate programs for the development of the Philippine rubber industry;

- Review and recommend the annual budget of the PRRI;

- Evaluate the implementation, efficiency and effectiveness of the programs and projects of the PRRI; and

- Recommend the establishment or abolition of satellite units or branches as may be deemed necessary.

Funding

Not more than forty percent (40%) of funds allocated under this Act and in subsequent annual appropriations shall be used for personnel services, and maintenance and

operating expenses; thirty-five percent (35%) for research and development as well as training and information; and twenty-five percent (25%) for seedling propagation and dispersal of rubber trees.

Institutional Obligations

Vision

To initiate and administer research, development and extension programs to improve quality and increase productivity of rubber especially for the benefit of the smallholder rubber producers.

Mission

A leading institution for Research, Development, and Extension for globally competitive, technology-based, economically and environmentally sustainable Philippine rubber industry for the improvement of the quality of life of stakeholders.

Strategic Focus

- Initiate research and development projects on rubber production and processing in order to address technology and policy gaps robust rubber industry, ensuring standard in production and meeting demands for quality rubber in both domestic and international market.
- Propagate and promote the planting and utilization of rubber

trees as source of latex and rubber products.

- Facilitate and enable the access of rubber producers and processors to quality rubber buddings, modern production techniques and other support services from production to marketing of rubber.

- Undertake training and capacity building program for the rubber producers, processors, and cooperatives in order to increase production of quality rubber and increase the level of income especially of poor smallholders.

- Support in the establishment of village-based rubber enterprises to generate livelihood opportunities.

- Promote cooperative development among stakeholders and provide them access to resources and technical know-how for the enhancement of their rubber enterprises

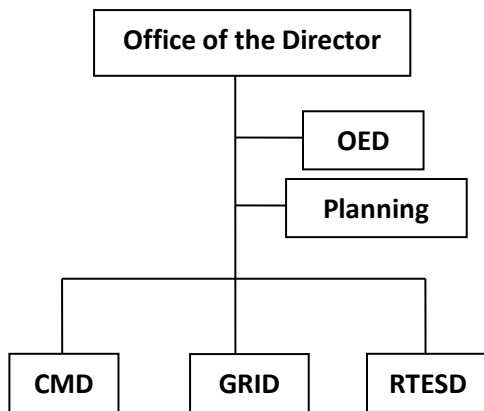
- Enter into Memoranda of Agreement and to receive grants from local and foreign funding sources through the DA.

Management

Organization

The Acting Executive Director is responsible for the administration and management of PRRI. In executing his duties, he is supported by the Division Chiefs.

The divisions are:



OED – Office of the Executive Director

CMD – Crop Management Division

GRID – Genetic Resources & Improvement
Division

RTESD – Rubber Technology & Extension
Services Division

Organizational Structure

Engr. Dennis H. Palabrica
Acting Executive Director

OED

Glenn Carl V. Andalhao
Accountant III

Kristine C. Cubero

Admin Officer IV/Budget Officer

Daireen O. Go

Planning Officer II

Ritchel J. Quisadio

Admin Assistant III/Cashier

CMD

Meynard Abello

Acting CMD Division Chief/SRS II

Gilbert D. Rance

Science Research Specialist I/Property
Officer

Luzmary O. Refugio

Science Research Analyst

Gemma A. Labayo

Science Aide

GRID

Honey Fe Gumay

Acting GRID Division Chief/SRS II

Ariel O. Vilar

Science Research Analyst/Personnel Officer

RTESD

Ricarte V. Castro

RTESD Division Chief

Girlye R. Saludo

Admin Officer/Training Specialist III

Claire Nova O. Abdulatip

Science Research Specialist II/Inspector

Julius G. Biolango
Training Specialist II

Evenezer Al Esmael
Science Research Analyst/Canvasser

Operations

Research and Development (R&D)

Research and Development is the main thrust of PRRI activities. A whole spectrum of R&D work ranging from upstream production to downstream processing is carried out in the research divisions mentioned above.

Strategy

The research activities are aimed at maximizing productivity; improving production efficiency and quality; and increasing value creation by expanding the rubber value chain to promote a globally competitive and sustainable industry.

Research Activities

(Based on the Annual Report 2018)

- *Phenotypic Diversity of Small Scale Hevea Germplasm Grown in PRRI Nursery*
- *Efficacy of Indigenous Botanical Fungicides Against White Root Rot Disease of Rubber*
- *IRRDB/Multilateral Clone Exchange Program*
- *Assessment on the Growth and Yield Performance of Rubber as Intercropped with other Agricultural Crops*
- *Documentation and Assessment of Effluent Treatments in Natural Rubber Processing Plants in Zamboanga Peninsula*
- *Management of Termite Infestation in Rubber using Phytoinsecticides in Zamboanga Peninsula*
- *Rubber Database Establishment and Management*
- *Profiling of Rubber Stakeholders in the Philippines*
- *Effects of Conservation Pits on the Growth and Yield*

*Performance Rubber Under
Naga, Zamboanga Sibugay
Condition*

- *Growth and Yield of Rubber
Trees as Applied with Different
Fertilization Rates*

- *Growth Performance of Rubber
Latex Timber Clones Under
Selected Mining Areas in
Zamboanga Peninsula*